

Chromebook Processing

When dealing with multiple schools and even multiple districts it can be an overwhelming task to keep track of, erase, re-deploy or re-sell the devices given to the students during the school year. With that in mind, EPS has designed a simple, step by step approach to erasing, testing and re-deploying or reselling the Chromebooks that are now saturating our educational infrastructure. By following the simple instructions provided you can be erasing and capturing all relevant information from the Chromebook in no time. When you are finished, the Chromebook will be back in Out-of-Box Experience mode ready for re-use or re-sale.

Product Highlights

- ✓ Chromebooks can be erased on-site, on-demand to ensure that all user data is removed before leaving the building.
- ✓ Chromebook diagnostics guarantee that your Chromebook is fully functional and ready for re-sale or re-deployment.
- ✓ Cosmetic Grading can be performed and recorded to better assess the condition and value of the Chromebook for re-sale or re-use.
- ✓ EPS' price-scraping technology gets the high, low, and average pricing from Ebay and Newegg to determine the most up to date re-sale value of your Chromebooks.
- ✓ Completely customizable comprehensive reports and labels can be automatically generated and printed for each Chromebook.

Additional Information

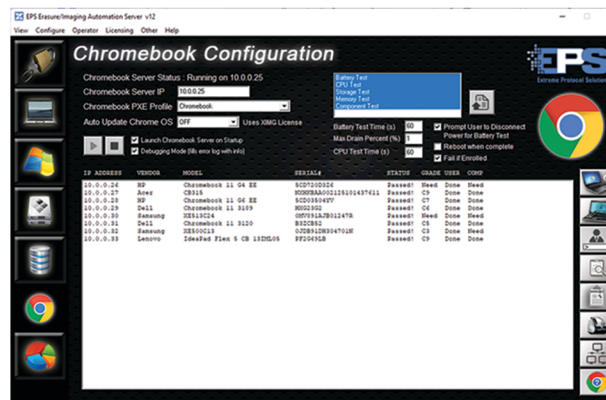
- ✓ Cloud-based licensing for easy deployment anywhere, anytime.
- ✓ Licenses come with unlimited technical support and updates as well as FREE Configuration and Web-Based Training.
- ✓ Cloud-based reporting and data analytics are available via our XCloud portal for an additional cost.
- ✓ All Chromebook specs and diagnostic results can easily be uploaded into any database or ERP solution.

Extreme Protocol Solutions

Email
Phone

sales@extremeprotocol.com
(508)-278-3600

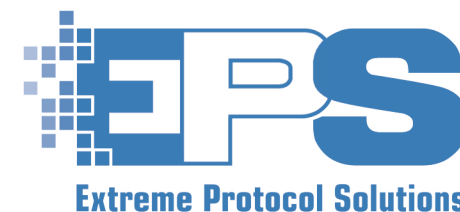
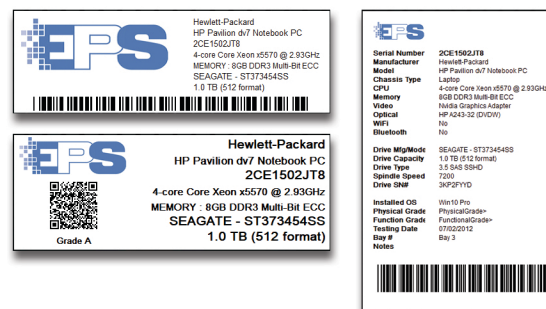
www.EnterpriseDataErasure.com



Comprehensive Diagnostics



Customized Labels



Customized Reporting



Customized Data Storage

